

MLPE CLIPS

NEW

MLPE stands for Module-Level Power Electronics, which includes optimizers and microinverters. With the new MLPE clips all optimizers, microinverters and cables can be attached correctly and safely attached to the frame.

1008067
ClickFit EVO MLPE Clip Light Weight



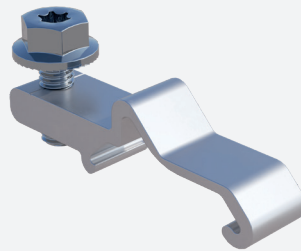
Product information

Sales price	€ 1,45
MOQ	100
Qty Box	100
Qty Pallet	8000
Intrastat code	39259020
EAN12 code	8719925886317
NW kg	0,015
GW kg	0,015

Packaging information

Unit	PCS	Box
Gross weight	0,015	1,51
Length (mm)	63	300
Width (mm)	58	200
Height (mm)	25	160
LM	0,0015	0,0236
Volume	0,00	0,01

1008068
ClickFit EVO MLPE Clip Heavy Weight



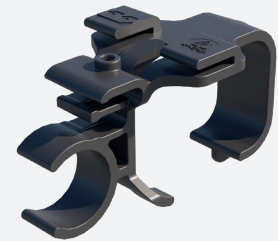
Product information

Sales price	€ 2,90
MOQ	100
Qty Box	100
Qty Pallet	4800
Intrastat code	76109090
EAN12 code	8719925886324
NW kg	0,033
GW kg	0,033

Packaging information

Unit	PCS	Box
Gross weight	0,033	3,33
Length (mm)	58	200
Width (mm)	70	120
Height (mm)	50	120
LM	0,0006	0,0091
Volume	0,00	0,00

1007042
FlatFix Fusion MLPE Clip Light Weight



Product information

Sales price	€ 1,59
MOQ	100
Qty Box	100
Qty Pallet	4000
Intrastat code	39259020
EAN12 code	8719925886331
NW kg	0,028
GW kg	0,028

Packaging information

Unit	PCS	Box
Gross weight	0,028	3,20
Length (mm)	25	400
Width (mm)	29	300
Height (mm)	57	180
LM	0,0022	0,0480
Volume	0,00	0,02